



# ALTA Door Lock

## Operation Manual





## WIFI Module Introduction:

- ◆Power consumption: <20uA (sleep power consumption), about 50mA (working power consumption);
- ◆Temporary authorization: support dynamic password and temporary password validity authorization;
- ◆Message reporting: No gateway required, directly connect to a router, and local unlocking events of door locks are reported to the cloud in real time;
- ◆Support APP: Support **ALTA WORLD** APP;



## 1. Add administrator

① Before connect the door lock, it must be add the admin. Light up the door lock screen, click [\*]+[#] on the touchpad to input new administrator.

### Add Admin User

There are 9 groups of admin information ( fingerprint / password / card ).

SET		Press "SET", enter admin information.
	Card	Input 6 digit password + "#", or input fingerprint 3 times, or read card. After adding 1 Admin, press 4 to continue adding other Admin.
	#	

### Add Normal User

SET		Press "SET", enter admin information.	
	Card	Press 1 to add user. Input 6 digit password + "#", or input fingerprint 3 times, or read card.	
	#		
010	369 369	Lily	Mark down the User ID and user information for easy delete in the future.



## 2. Registration and login

### 2.1 APP download

Please download “Alta World” via App Store or Google play Store.



**ALTA WORLD**  
ALTA TECNOLOGIA

Uninstall

Open

#### What's new •

Last updated 09-Mar-2021



Alta World ready with new features and settings.

#### Rate this app

Tell others what you think



[Write a review](#)

#### Developer contact



Website



Email

[contact@altatecnologia.tech](mailto:contact@altatecnologia.tech)



Privacy Policy

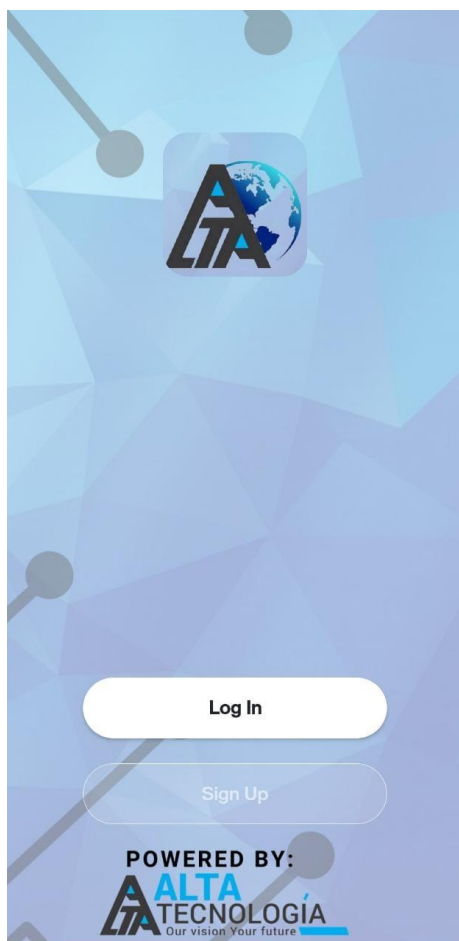
**[www.altatecnologia.tech](http://www.altatecnologia.tech) / Phone: 020-26330477/ 91-9325988487**



## 2.2 Login authentication

① Login by email or phone number

② Edit user information



## Register

India >

Email

Get Verification Code

<

## Set Password

\*\*\*\*\*

✕

Done



## 3. Lock management

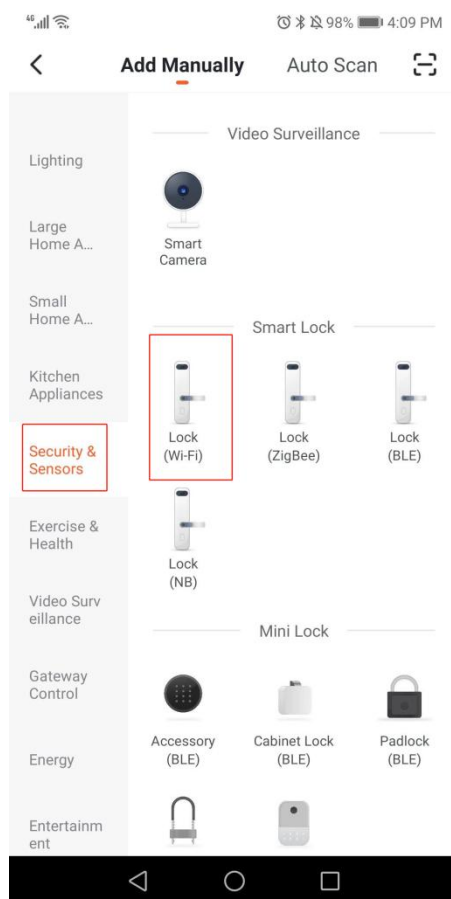
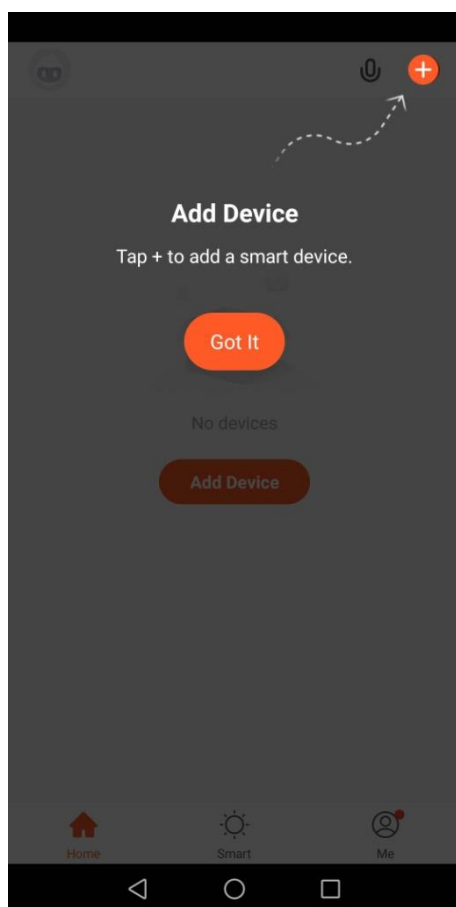
### 3.1 Lock adding

① Open Bluetooth

② Make sure that the door lock has added an administrator user before adding ALTA WIFI door lock

③ After you are ready to add a device, click "Add Device" or "+" on the upper right of the APP homepage, and enter "Add Equipment" page;

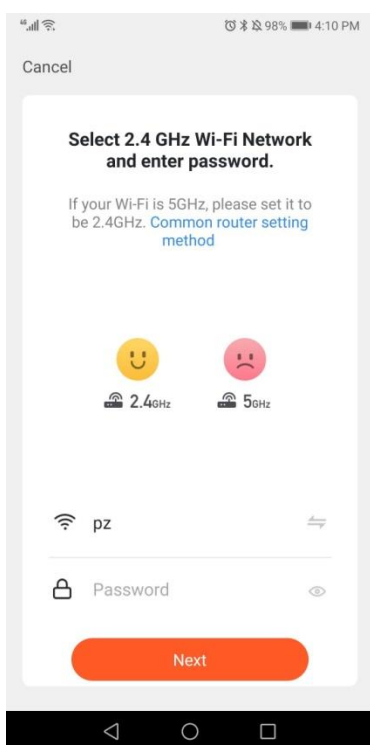
④ Click "Security Sensing" and find "Door Lock (Wi-Fi)" to enter;





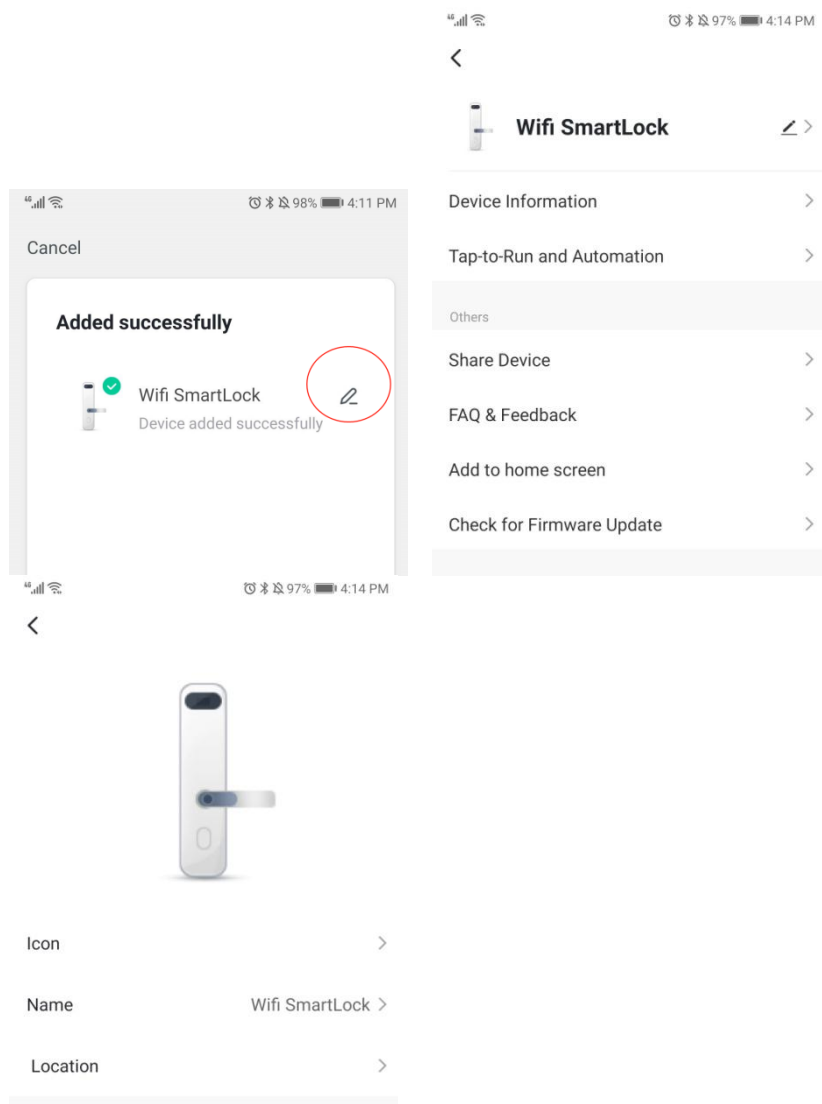
⑤. Select 2.4GHz Wi-Fi network and enter the password to enter the next step. If GPS positioning is not turned on, turn on this.

⑥ **Short press “set” key**, wait for the Wi-Fi module indicator to flash quickly, then enter the network distribution mode;



⑦ Select fast flashing (0.5/1 time) on the App for pairing;

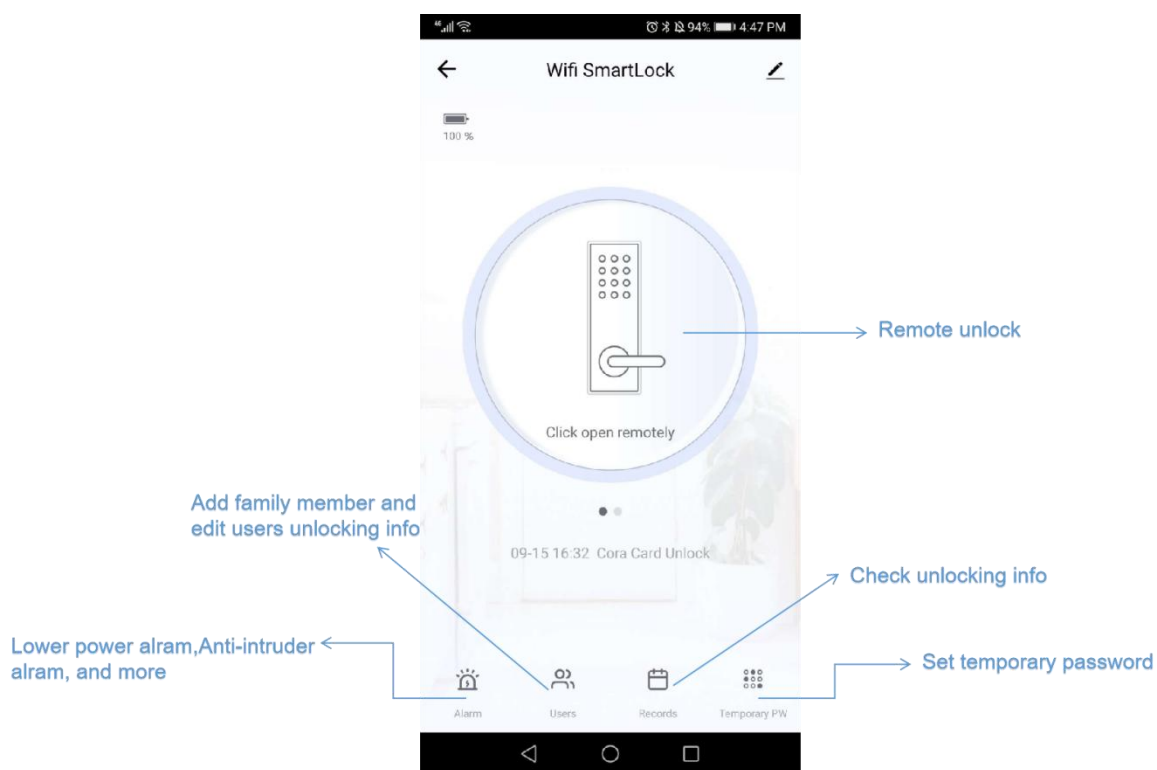
Wait for the successful addition, modify the [device name], and click [Finish].







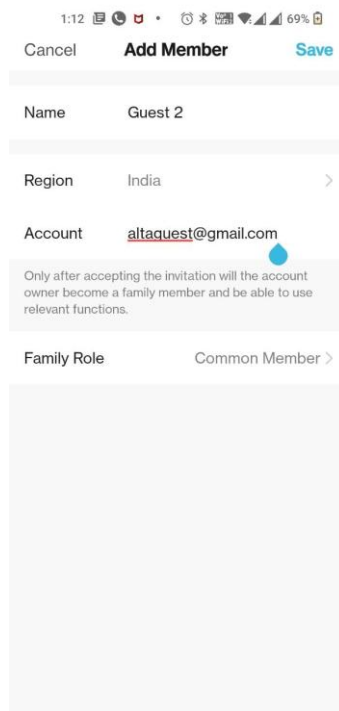
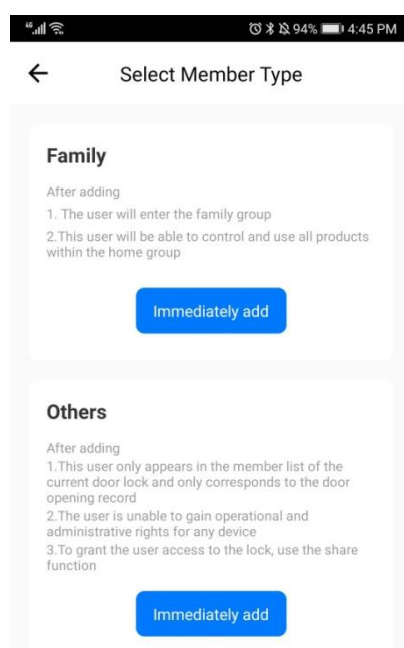
## 4. WiFi smart door lock APP application





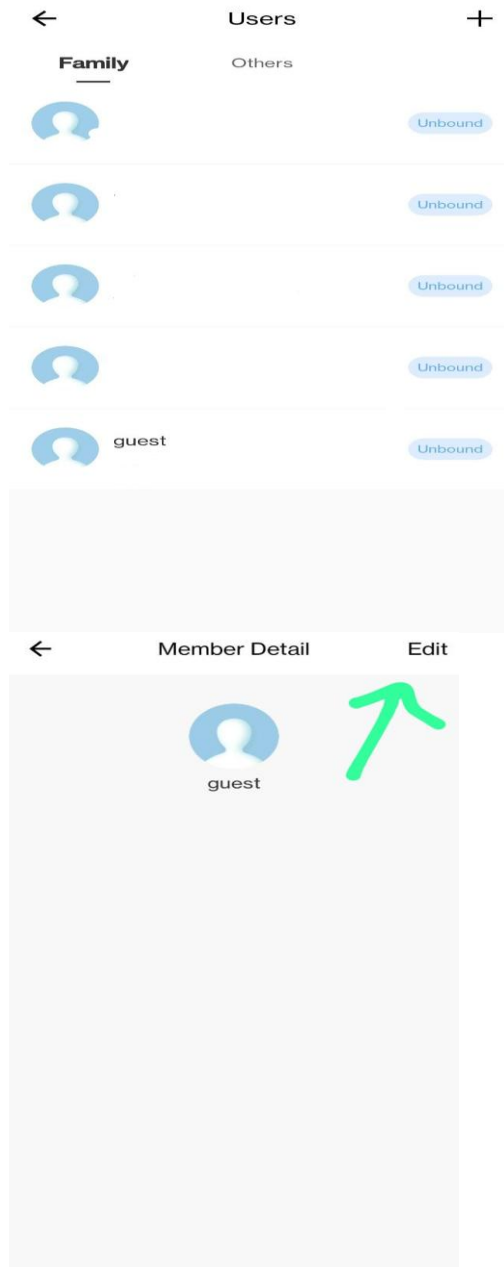
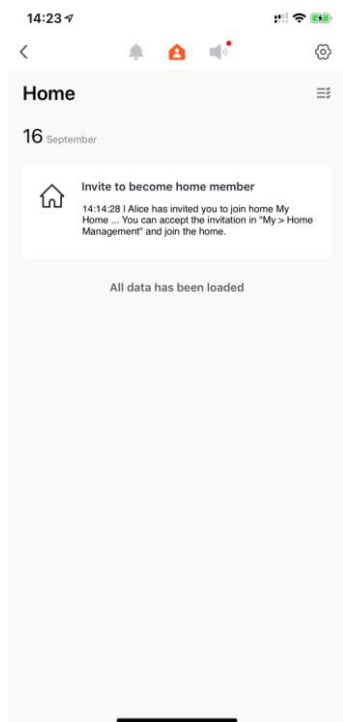
## 5.Member management:

①Click"users" and click "+" on the upper right of the APP homepage and choose "family" and add.



②Input the family member info,and then your family member would receive an invitation message.

③ Choose one member to edit and input the access info:





④ It requests to input the unlock number when add the fingerprint, password and card, it needs to operate “add users” on the lock first and remember the users number and then input the number. Operation can check Page 3.

← Edit member information Save

Account altatecnolog [redacted]

Name  
guest

Fingerprint Unlock  
+ Add the fingerprint

Password Unlock  
+ Add a password

Card Unlock  
+ Add a door card

Face Recognition Unlock  
+ Add a face

← Fingerprint Unlock

Fingerprint Unlock

Please enter

Enter the Fingerprint Unlock number (0-999) assigned to the lock

Set to hijack Fingerprint Unlock ☐

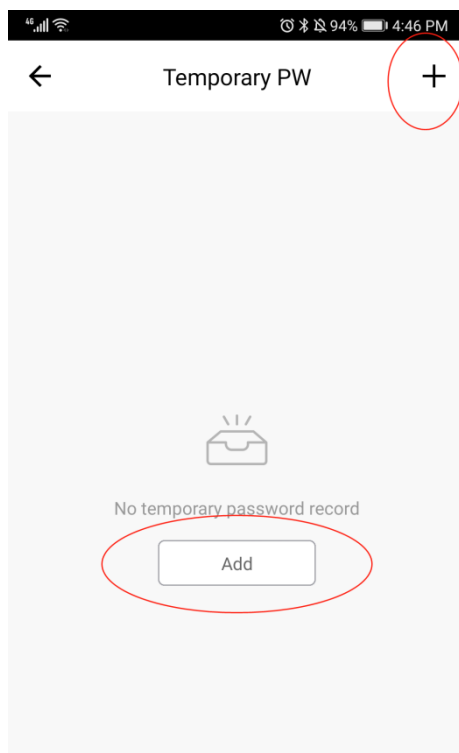
When the ID is marked as anti-hijacking, the hijacking alarm will be triggered when the unlocking record of the ID occurs on the door lock

If click “Others” to add, same operation as 5.④



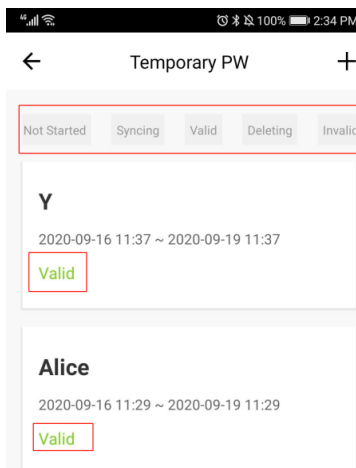
## 6. Temporary password

① Create a temporary password on the APP, enter the password, name and valid time, after creation, it will display "to be issued";



② Press "9" + "#" on the door lock to wake up the ALTA module, and the module indicator will light up.

Waiting for the connection, the temporary password of the cloud will be obtained after the connection, and the status of the temporary password will be changed from "syncing" to "valid".

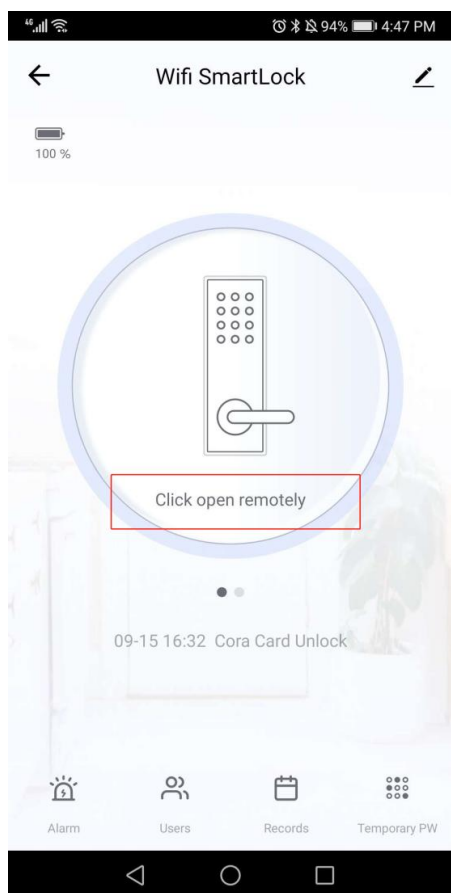




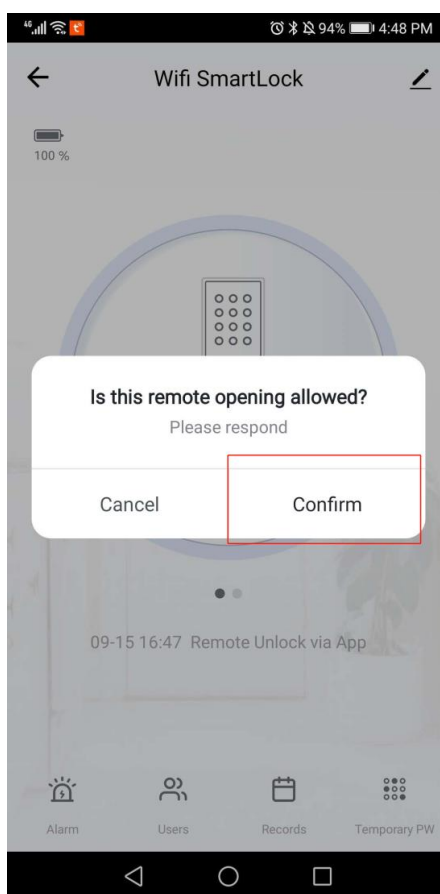
## 7. Remote unlock function

① Press "9" + "#" on the door lock to wake up the ALTA module, and the module indicator will light up.

② Wait for the module to connect to the cloud. On the home page of the APP interface, a button of "click open remotely" will appear. Confirm whether to unlock;



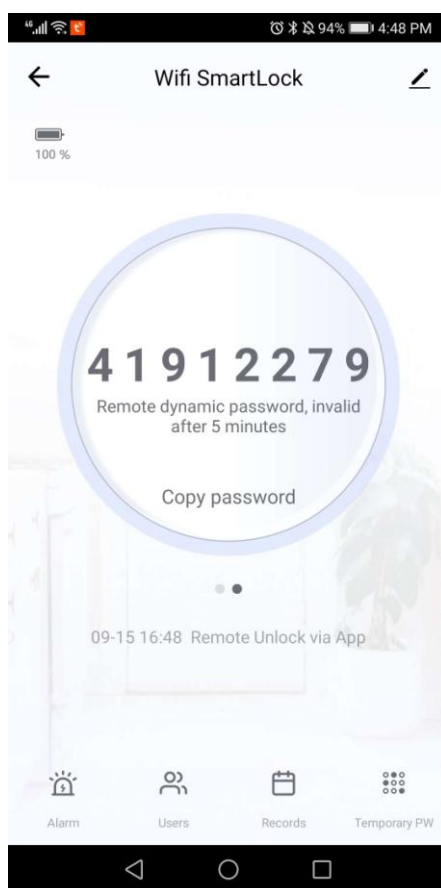
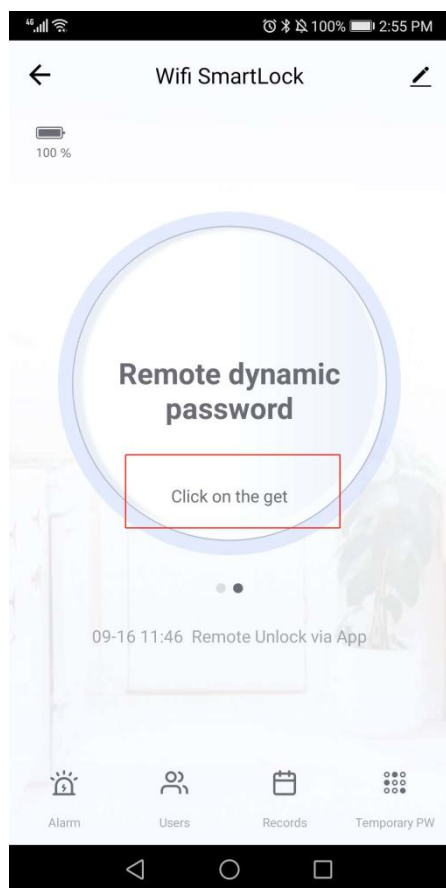
8.





## 8. Remote dynamic password

- ① Click "click on the get" under the remote dynamic password on the APP side to get the password;
- ② Press "9" + "#" at the door lock to wake up the ALTA module, and the module indicator will light up.





## 9. Lock initialization

Long press the [SET] button on the back panel until lock sounds beep.

Then all lock information will be removed.







# ALTA Locks

## WARRANTY CARD

Product Code:

Customer Name & Details:

Date of Installation:

Company Sign and Stamp



**Scan For  
Warranty Card**

Scan the QR code to register for the product warranty. Instead of the Bill Copy in the form Submit the warranty card.

## APP CONTROL



Unlock Lock Through App, Irrespective of the location.



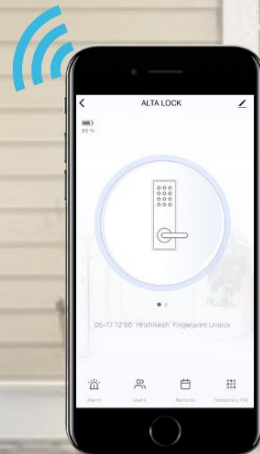
Record of every unlock on the lock through Notification.



Alert for lock Tampering, Hacking or Breaking the lock. Battery notification



One Time Password, Specific password for guests and visitors for limited validity.



**Call Today To  
Buy at an  
exciting Price.**

PHONE NO.: 020-26330477 / 9325988487

CONTACT@ALTATECNOLOGIA.TECH

WWW.ALTATECNOLOGIA.TECH